

CCNA 1 Chapter 2 V4.0 Answers 100% **updated 2011**

1. Which statements correctly identify the role of intermediary devices in the network? (Choose three.)

- determine pathways for data
- initiate data communications
- retime and retransmit data signals
- originate the flow of data
- manage data flows
- final termination point for data flow

2. Select the statements that are correct concerning network protocols. (Choose three.)

- define the structure of layer specific PDU's
- dictate how to accomplish layer functions
- outline the functions necessary for communications between layers
- limit the need for hardware compatibility
- require layer dependent encapsulations
- eliminate standardization among vendors

3. What are two functions of encapsulation? (Choose two.)

- tracks delay between end devices
- enables consistent network paths for communication
- allows modification of the original data before transmission
- identifies pieces of data as part of the same communication
- ensures that data pieces can be directed to the correct receiving end device

4. What is a primary function of the trailer information added by the data link layer encapsulation?

- supports error detection
- ensures ordered arrival of data
- provides delivery to correct destination
- identifies the devices on the local network
- assists intermediary devices with processing and path selection

5. Which two layers of the OSI model have the same functions as the TCP/IP model Network Access Layer? (Choose two.)

- Network
- Transport
- Physical
- Data Link
- Session

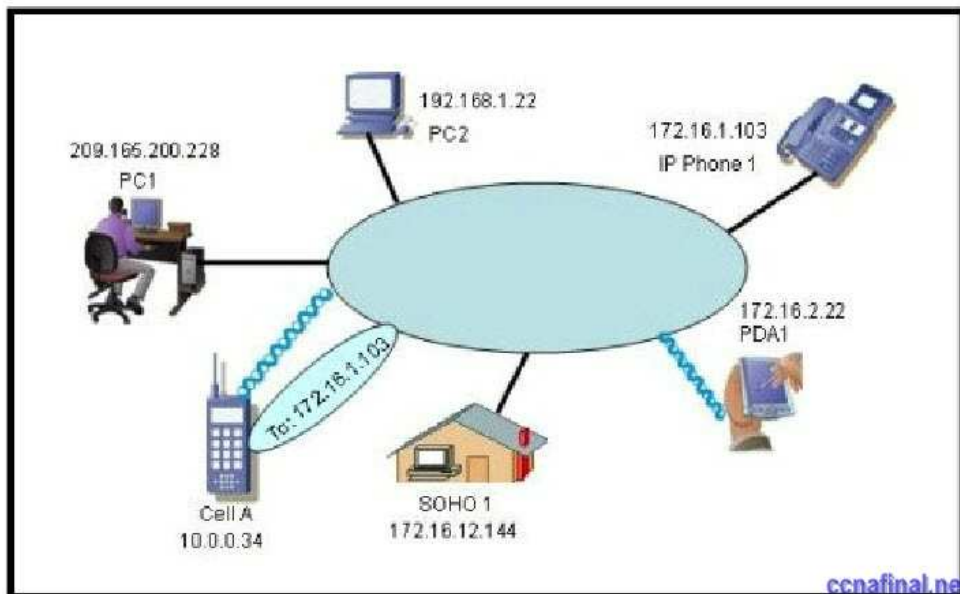
6. What is a PDU?

corruption of a frame during transmission
data reassembled at the destination
retransmitted packets due to lost communication
a layer specific encapsulation

7. Which characteristic correctly refers to end devices in a network?

manage data flows
originate data flow
retime and retransmit data signals
determine pathways for data

8.

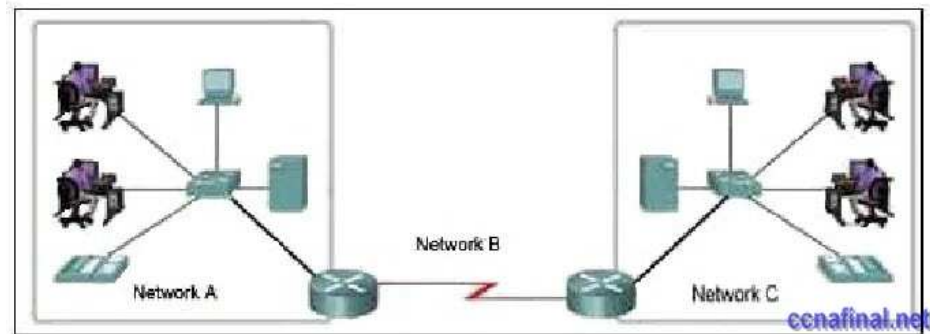


ccna 1 chapter 2

Refer to the exhibit. “Cell A” at IP address 10.0.0.34 has established an IP session with “IP Phone 1” at IP address 172.16.1.103. Based upon the graphic, which device type best describes the function of wireless device “Cell A?”

the destination device
an end device
an intermediate device
a media device

9.



ccna 1 chapter 2

Refer to the exhibit. Which three labels correctly identify the network types for the network segments that are shown? (Choose three.)

Network A — WAN

Network B — WAN

Network C — LAN

Network B — MAN

Network C — WAN

Network A — LAN

10. Which three statements best describe a Local Area Network (LAN)? (Choose three.)

A LAN is usually in a single geographical area.

The network is administered by a single organization.

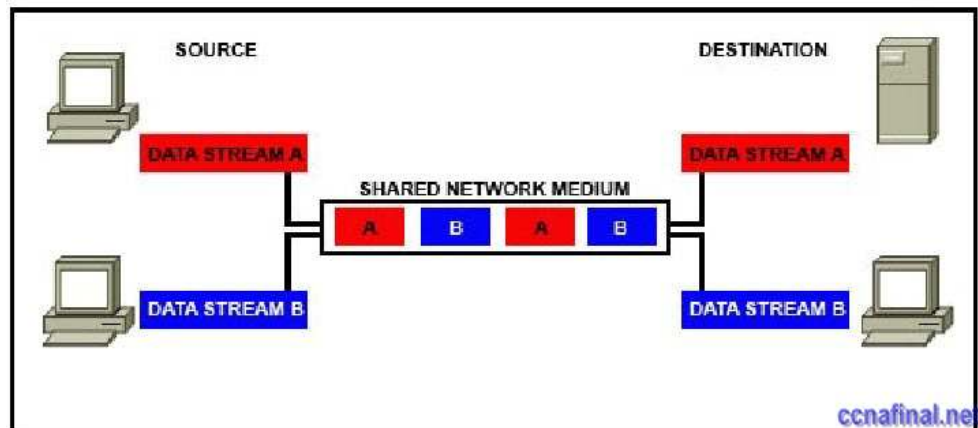
The connection between segments in the LAN is usually through a leased connection.

The security and access control of the network are controlled by a service provider.

A LAN provides network services and access to applications for users within a common organization.

Each end of the network is generally connected to a Telecommunication Service Provider (TSP).

11.



ccna 1 chapter 2

Refer to the exhibit. Which networking term describes the data interleaving process represented in the graphic?

- piping
- PDU
- streaming
- multiplexing**
- encapsulation

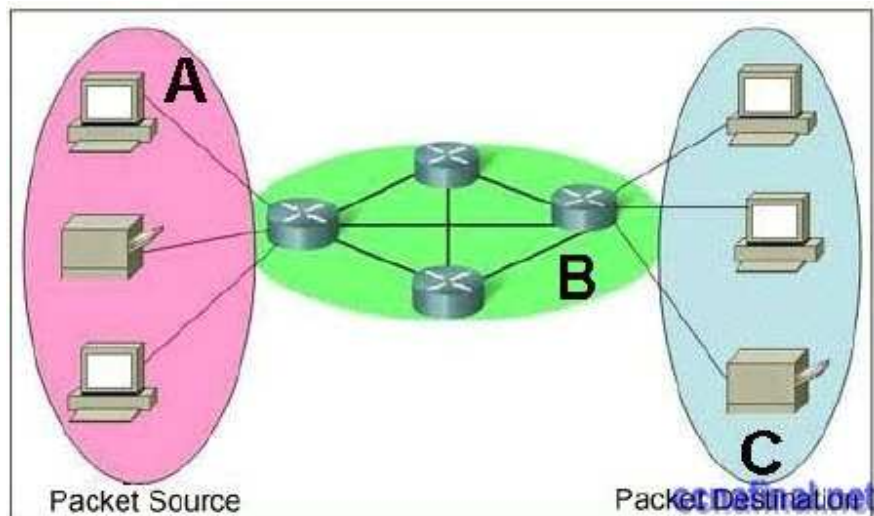
12. What is the primary purpose of Layer 4 port assignment?

- to identify devices on the local media
- to identify the hops between source and destination
- to identify to the intermediary devices the best path through the network
- to identify the source and destination end devices that are communicating
- to identify the processes or services that are communicating within the end devices**

13. What device is considered an intermediary device?

- file server
- IP phone
- laptop
- printer
- switch**

14.



ccna 1 chapter 2

Refer to the exhibit. Which term correctly identifies the device type that is included in the area B?

source
end
transfer
intermediary

15.



ccna 1 chapter 2

Refer to the exhibit. What type of network is shown?

WAN
MAN
LAN
WLAN

16. Which layer encapsulates the segment into packets?

physical

data link

network

transport

17. What can be identified by examining the network layer header?

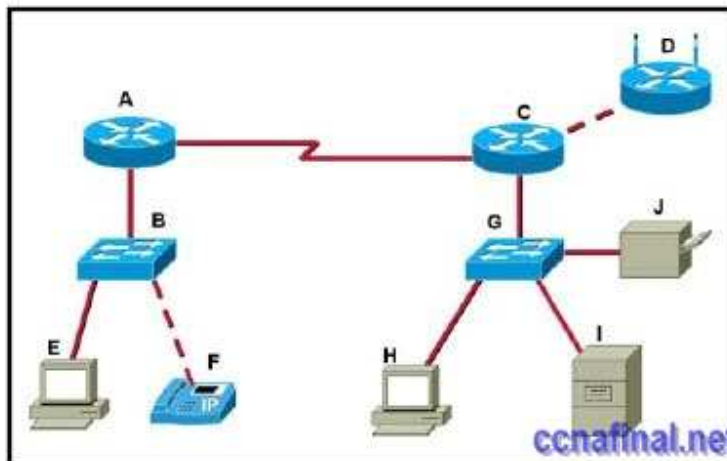
the destination device on the local media

the destination host address

the bits that will be transferred over the media

the source application or process creating the data

18.



ccna 1 chapter 2

Refer to the exhibit. Which set of devices contains only end devices?

A, C, D

B, E, G, H

C, D, G, H, I, J

D, E, F, H, I, J

E, F, H, I, J

19. During the encapsulation process, what occurs at the data link layer?

No address is added.

The logical address is added.

The physical address is added.

The process port number is added.

20. What is the purpose of the TCP/IP Network Access layer?

path determination and packet switching

www.ccnafinal.net www.ccnafinalexam.com www.ccnaanswers.org www.ccna4u.net
www.ccna4u.org www.ccna4u.info

data presentation
reliability, flow control, and error detection
network media control
the division of segments into packets

21. What is the proper order of the layers of the OSI model from the highest layer to the lowest layer?

physical, network, application, data link, presentation, session, transport
application, physical, session, transport, network, data link, presentation
application, presentation, physical, session, data link, transport, network
application, presentation, session, transport, network, data link, physical
presentation, data link, session, transport, network, physical, application

Taged:

[complete ccna 1 packet tracer answer](#)

Related Posts

- [CCNA 1 Final Exam V4.0 Answers](#)
- [CCNA 1 Chapter 11 V4.0 Answers](#)
- [CCNA 1 Chapter 10 V4.0 Answers](#)
- [CCNA 1 Chapter 9 V4.0 Answers](#)
- [CCNA 1 Chapter 8 V4.0 Answers](#)
- [CCNA 1 Chapter 7 V4.0 Answers](#)
- [CCNA 1 Chapter 6 V4.0 Answers](#)
- [CCNA 1 Chapter 5 V4.0 Answers](#)
- [CCNA 1 Chapter 4 V4.0 Answers 100% updated 2011](#)
- [CCNA 1 Chapter 3 V4.0 Answers 100 Updated 2011](#)
- [CCNA 1 Chapter 1 V4.0 Answers Updated 2011 100%](#)
- [CCNA 1 Final Exam Answers](#)

Tags: [CCNA 1](#), [CCNA 1 Final](#), [CCNA 1 Final Exam](#), [CCNA 1 Final Exam Answers](#), [CCNA 1 final exam answers 2010](#), [CCNA 1 final exam answers 2011](#), [CCNA 1 Final Exam Questions and Answers 2010](#), [ccna final exam answers 4.0](#), [ccna1 final exam](#), [CCNA4 Final](#)
[← CCNA 4 Final answers \(100% Guaranteed – Updated Dec 2010\)](#) [CCNA 2 Final Exam Answers →](#)

2 Responses to CCNA 1 Final Exam Answers